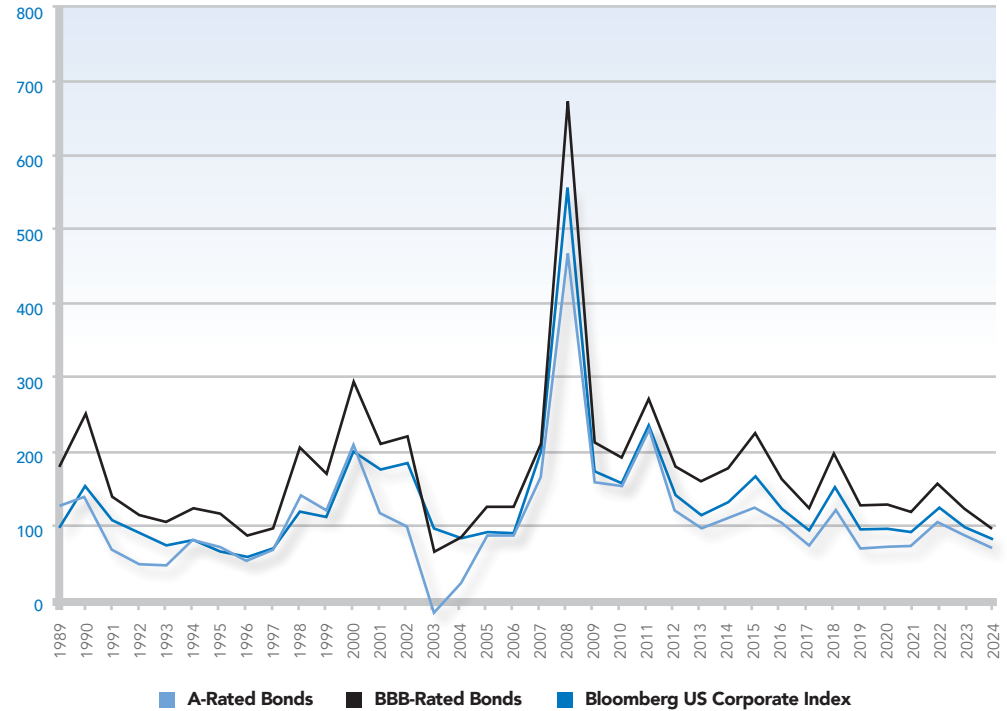


HISTORICAL INTEREST RATES & CREDIT SPREADS

10 Yr U.S. Treasury Note		A-Rated Bonds		BBB-Rated Bonds		Bbg US Corporate Index	
Month - Year	Yield to Maturity	Yield*	Spread	Yield*	Spread	Yield*	Spread
31-Dec-89	7.92	9.16	124	9.71	179	8.89	97
31-Dec-90	8.07	9.46	139	10.56	249	9.58	151
31-Dec-91	6.07	6.74	67	7.45	138	7.14	107
31-Dec-92	6.69	7.16	47	7.81	112	7.57	88
31-Dec-93	5.79	6.26	47	6.83	104	6.52	73
31-Dec-94	7.83	8.61	78	9.05	122	8.61	78
31-Dec-95	5.58	6.27	69	6.73	115	6.23	65
31-Dec-96	6.42	6.93	51	7.27	85	6.98	56
31-Dec-97	5.85	6.51	66	6.79	94	6.52	67
31-Dec-98	4.66	6.04	138	6.70	204	5.84	118
31-Dec-99	6.44	7.65	121	8.12	168	7.55	111
31-Dec-00	5.12	7.21	209	8.06	294	7.11	199
31-Dec-01	5.04	6.20	116	7.14	210	6.78	174
31-Dec-02	3.83	4.79	96	6.04	221	5.67	184
31-Dec-03	4.32	4.15	-17	4.95	63	5.27	95
31-Dec-04	4.22	4.43	21	5.05	83	5.03	81
31-Dec-05	4.39	5.25	86	5.63	124	5.29	90
31-Dec-06	4.70	5.56	86	5.94	124	5.58	88
31-Dec-07	4.03	5.69	166	6.13	210	6.01	198
31-Dec-08	2.25	6.92	467	8.98	673	7.80	555
31-Dec-09	3.84	5.40	156	5.96	212	5.56	172
31-Dec-10	3.29	4.80	151	5.20	191	4.85	156
31-Dec-11	1.68	3.97	229	4.39	271	4.02	234
31-Dec-12	1.76	2.95	119	3.56	180	3.17	141
31-Dec-13	3.03	3.98	95	4.61	158	4.17	114
31-Dec-14	2.17	3.26	109	3.95	178	3.48	131
31-Dec-15	2.27	3.49	122	4.51	224	3.92	165
31-Dec-16	2.45	3.46	101	4.05	160	3.68	123
31-Dec-17	2.41	3.14	73	3.65	124	3.34	93
31-Dec-18	2.69	3.87	118	4.66	197	4.22	153
31-Dec-19	1.92	2.62	70	3.12	120	2.85	93
31-Dec-20	0.92	1.65	73	2.13	121	1.88	96
31-Dec-21	1.51	2.25	74	2.64	113	2.43	92
31-Dec-22	3.88	4.97	109	5.47	159	5.18	130
31-Dec-23	3.88	4.73	85	5.09	121	4.87	99
30-Apr-24	4.68	5.42	74	5.75	107	5.55	87
31-May-24	4.50	5.22	72	5.54	104	5.35	85
30-Jun-24	4.40	5.21	81	5.54	114	5.34	94
31-Jul-24	4.03	4.84	81	5.17	114	4.97	94
31-Aug-24	3.90	4.68	78	5.04	114	4.83	93
30-Sep-24	3.78	4.51	73	4.89	111	4.67	89
31-Oct-24	4.29	4.99	70	5.32	103	5.13	84
30-Nov-24	4.17	4.83	66	5.12	95	4.95	78
31-Dec-24	4.57	5.25	68	5.54	97	5.37	80
31-Jan-25	4.54	5.21	67	5.50	96	5.33	79
28-Feb-25	4.21	4.95	74	5.26	105	5.08	87
31-Mar-25	4.21	5.01	80	5.36	115	5.15	94

Source: Barclays Capital 04/01/2025. For Financial Professional Use *Represents an approximation.

CREDIT SPREADS TO TREASURIES | YEARS ENDED DECEMBER 31



■ A-Rated Bonds ■ BBB-Rated Bonds ■ Bloomberg US Corporate Index

Averages	A-Rated Bonds	BBB-Rated Bonds	Bbg US Corporate Index
Period ended March 31, 2025			
2 years	0.85	1.23	1.00
Period ended December 31, 2024			
5 years	0.82	1.22	0.99
10 years	0.89	1.44	1.12
20 years	1.28	1.88	1.50

KEY OBSERVATIONS

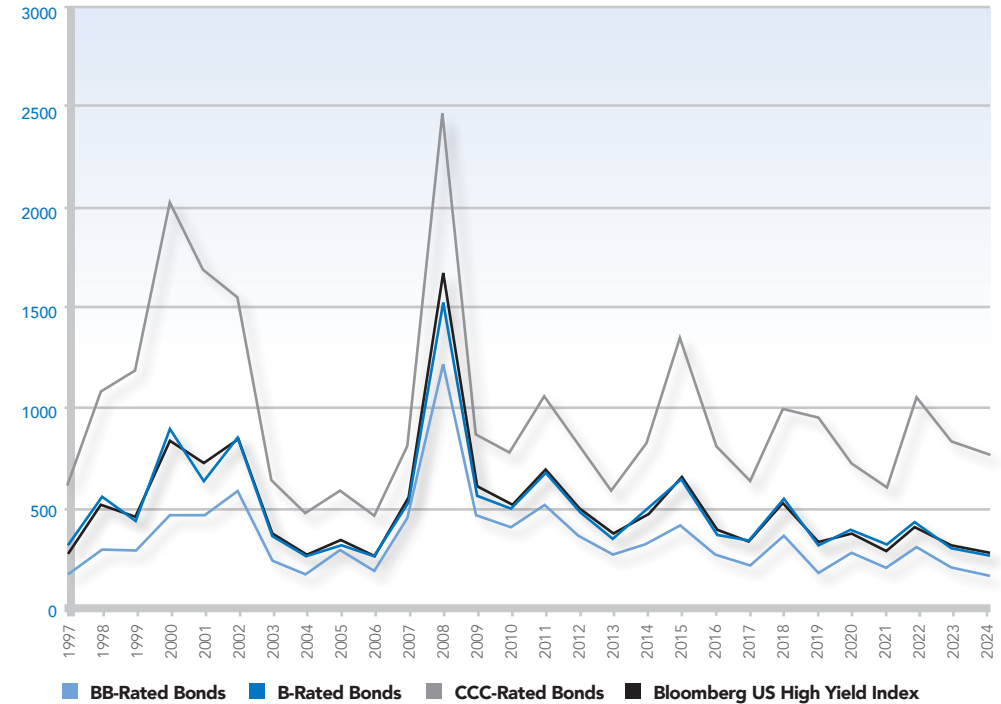
For the month of March 2025, the yield on the 10-year US Treasury Note remained the same at 4.21%. The Bloomberg US Corporate Index widened by 7 basis points to 0.94% over Treasuries. The A Rated Corporate Credit Spread increased by 6 basis points to 0.80%. The BBB Rated Corporate Credit Spread widened by 10 basis points to 1.15%.

HISTORICAL INTEREST RATES & CREDIT SPREADS

Month - Year	5 Yr U.S. Treasury Note	BB-Rated Bonds		B-Rated Bonds		CCC-Rated Bonds		Bbg US High Yield Index	
	Yield to Maturity	Yield*	Spread	Yield*	Spread	Yield*	Spread	Yield*	Spread
31-Dec-97	5.71	7.39	168	8.97	326	11.88	617	8.59	288
31-Dec-98	4.56	7.50	294	10.15	559	15.38	1082	9.83	527
31-Dec-99	6.36	9.20	284	10.84	448	18.22	1186	11.03	467
31-Dec-00	4.99	9.64	465	13.99	900	25.25	2026	13.47	848
31-Dec-01	4.38	8.87	449	10.80	642	21.30	1692	11.66	728
31-Dec-02	2.78	8.60	582	11.37	859	18.30	1552	11.29	851
31-Dec-03	3.25	5.64	239	6.96	371	9.65	640	7.18	393
31-Dec-04	3.63	5.42	179	6.30	267	8.38	475	6.50	287
31-Dec-05	4.35	7.27	292	7.61	326	10.23	588	7.91	356
31-Dec-06	4.70	6.53	183	7.39	269	9.28	458	7.44	274
31-Dec-07	3.45	7.95	450	8.81	536	11.55	810	9.14	569
31-Dec-08	1.55	13.66	1211	16.75	1520	26.21	2466	18.17	1662
31-Dec-09	2.69	7.22	453	8.36	567	11.37	868	8.85	616
31-Dec-10	2.01	6.00	399	7.07	506	9.76	775	7.27	526
31-Dec-11	0.83	5.95	512	7.65	682	11.39	1056	7.82	699
31-Dec-12	0.72	4.31	359	5.58	486	8.84	812	5.83	511
31-Dec-13	1.75	4.44	269	5.39	364	7.66	591	5.57	382
31-Dec-14	1.65	4.89	324	6.67	502	9.85	820	6.48	483
31-Dec-15	1.76	5.93	417	8.30	654	15.27	1351	8.36	660
31-Dec-16	1.93	4.63	270	5.75	382	10.00	807	6.02	409
31-Dec-17	2.21	4.32	211	5.64	343	8.36	615	5.64	343
31-Dec-18	2.51	6.05	354	7.82	531	12.40	989	7.77	526
31-Dec-19	1.69	3.51	182	4.93	324	10.89	920	5.05	336
31-Dec-20	0.36	3.00	264	4.15	379	7.51	715	3.96	360
31-Dec-21	1.26	3.20	194	4.39	313	7.22	596	4.09	283
31-Dec-22	4.01	6.96	295	8.90	489	15.55	1154	8.70	469
31-Dec-23	3.85	5.86	201	6.95	310	11.94	809	7.08	323
30-Apr-24	4.72	6.54	182	7.52	280	12.91	819	7.73	301
31-May-24	4.51	6.32	181	7.30	279	13.17	866	7.59	308
30-Jun-24	4.38	6.15	177	7.17	279	13.56	918	7.47	309
31-Jul-24	3.91	5.80	189	6.71	280	12.90	899	7.05	314
31-Aug-24	3.70	5.45	175	6.47	277	12.59	889	6.75	305
30-Sep-24	3.56	5.36	180	6.41	285	11.21	765	6.51	295
31-Oct-24	4.16	5.90	174	6.87	271	11.32	716	6.98	282
30-Nov-24	4.05	5.63	158	6.59	254	10.88	683	6.71	266
31-Dec-24	4.38	6.17	179	7.15	277	11.41	703	7.25	287
31-Jan-25	4.33	5.89	156	6.83	250	10.94	661	6.94	261
28-Feb-25	4.02	5.80	178	6.72	270	11.00	698	6.82	280
31-Mar-25	3.95	6.14	219	7.41	346	12.47	852	7.42	347

Source: Barclays Capital 04/01/2025. For Financial Professional Use *Represents an approximation.

CREDIT SPREADS TO TREASURIES | YEARS ENDED DECEMBER 31



Averages	BB	B	CCC	Bbg US High Yield Index
Period ended March 31, 2025				
2 years	2.10	3.25	8.47	3.36
Period ended December 31, 2024				
5 years	2.27	3.54	7.95	3.44
10 years	2.57	4.00	8.66	4.00
15 years	2.95	4.36	8.48	4.40
20 years	3.51	4.88	8.95	5.04

KEY OBSERVATIONS

For the month of March 2025, the yield on the 5-year US Treasury Note ended at 3.95%, 7 basis points lower from the previous month. The Bloomberg US High Yield Index widened by 67 basis points to 3.47% over Treasuries. The BB Rated Corporate Credit Spread increased by 41 basis points to 2.19%. The B Rated Corporate Credit Spread increased by 76 basis points to 3.46%. The CCC Rated Corporate Credit Spread increased by 154 basis points to 8.52%.