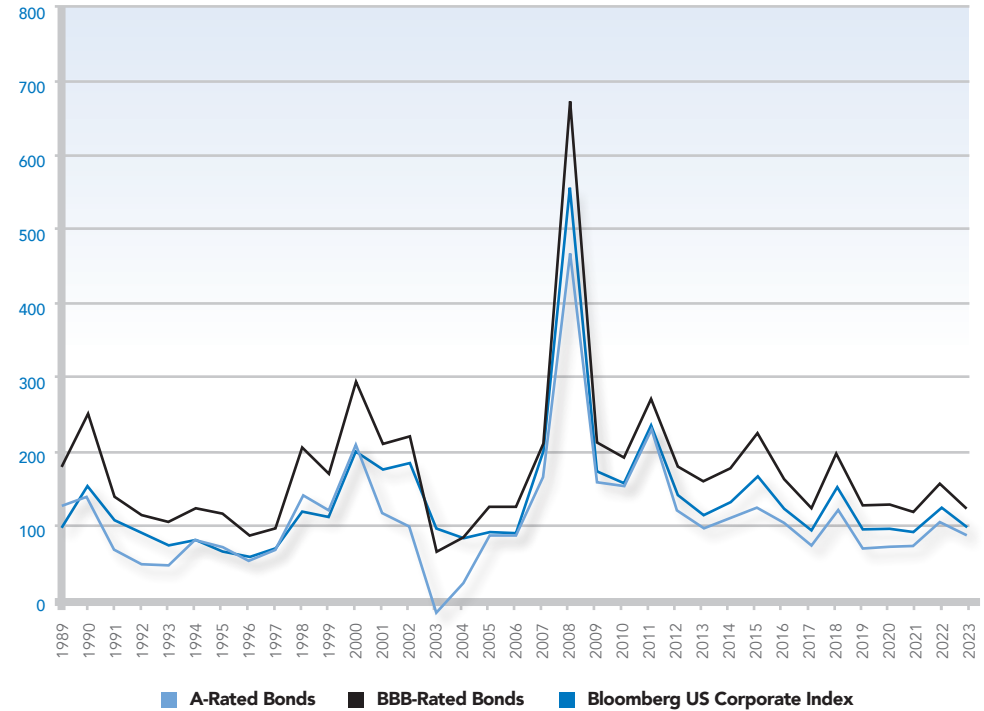


HISTORICAL INTEREST RATES & CREDIT SPREADS

10 Yr U.S. Treasury Note	A-Rated Bonds		BBB-Rated Bonds		Bbg US Corporate Index		
Month - Year	Yield to Maturity	Yield*	Spread	Yield*	Spread	Yield*	Spread
31-Dec-89	7.92	9.16	124	9.71	179	8.89	97
31-Dec-90	8.07	9.46	139	10.56	249	9.58	151
31-Dec-91	6.07	6.74	67	7.45	138	7.14	107
31-Dec-92	6.69	7.16	47	7.81	112	7.57	88
31-Dec-93	5.79	6.26	47	6.83	104	6.52	73
31-Dec-94	7.83	8.61	78	9.05	122	8.61	78
31-Dec-95	5.58	6.27	69	6.73	115	6.23	65
31-Dec-96	6.42	6.93	51	7.27	85	6.98	56
31-Dec-97	5.85	6.51	66	6.79	94	6.52	67
31-Dec-98	4.66	6.04	138	6.70	204	5.84	118
31-Dec-99	6.44	7.65	121	8.12	168	7.55	111
31-Dec-00	5.12	7.21	209	8.06	294	7.11	199
31-Dec-01	5.04	6.20	116	7.14	210	6.78	174
31-Dec-02	3.83	4.79	96	6.04	221	5.67	184
31-Dec-03	4.32	4.15	-17	4.95	63	5.27	95
31-Dec-04	4.22	4.43	21	5.05	83	5.03	81
31-Dec-05	4.39	5.25	86	5.63	124	5.29	90
31-Dec-06	4.70	5.56	86	5.94	124	5.58	88
31-Dec-07	4.03	5.69	166	6.13	210	6.01	198
31-Dec-08	2.25	6.92	467	8.98	673	7.80	555
31-Dec-09	3.84	5.40	156	5.96	212	5.56	172
31-Dec-10	3.29	4.80	151	5.20	191	4.85	156
31-Dec-11	1.68	3.97	229	4.39	271	4.02	234
31-Dec-12	1.76	2.95	119	3.56	180	3.17	141
31-Dec-13	3.03	3.98	95	4.61	158	4.17	114
31-Dec-14	2.17	3.26	109	3.95	178	3.48	131
31-Dec-15	2.27	3.49	122	4.51	224	3.92	165
31-Dec-16	2.45	3.46	101	4.05	160	3.68	123
31-Dec-17	2.41	3.14	73	3.65	124	3.34	93
31-Dec-18	2.69	3.87	118	4.66	197	4.22	153
31-Dec-19	1.92	2.62	70	3.12	120	2.85	93
31-Dec-20	0.92	1.65	73	2.13	121	1.88	96
31-Dec-21	1.51	2.25	74	2.64	113	2.43	92
31-Dec-22	3.88	4.97	109	5.47	159	5.18	130
30-Apr-23	3.43	4.59	116	5.09	166	4.79	136
31-May-23	3.65	4.82	117	5.34	169	5.03	138
30-Jun-23	3.84	4.88	104	5.36	152	5.07	123
31-Jul-23	3.96	4.91	95	5.34	138	5.08	112
31-Aug-23	4.11	5.12	101	5.55	144	5.29	118
30-Sep-23	4.57	5.62	105	6.04	147	5.78	121
31-Oct-23	4.93	6.06	113	6.49	156	6.22	129
30-Nov-23	4.33	5.21	88	5.63	130	5.37	104
31-Dec-23	3.88	4.73	85	5.09	121	4.87	99
31-Jan-24	3.91	4.73	82	5.09	118	4.87	96
29-Feb-24	4.25	5.07	82	5.43	118	5.21	96
31-Mar-24	4.20	4.97	77	5.30	110	5.10	90

Source: Barclays Capital 04/01/2024. For Financial Professional Use *Represents an approximation.

CREDIT SPREADS TO TREASURIES | YEARS ENDED DECEMBER 31



Averages	A-Rated Bonds	BBB-Rated Bonds	Bbg US Corporate Index
Period ended March 31, 2024			
2 years	1.06	1.54	1.26
Period ended December 31, 2023			
5 years	0.82	1.27	1.02
10 years	0.93	1.52	1.18
20 years	1.26	1.87	1.50

KEY OBSERVATIONS

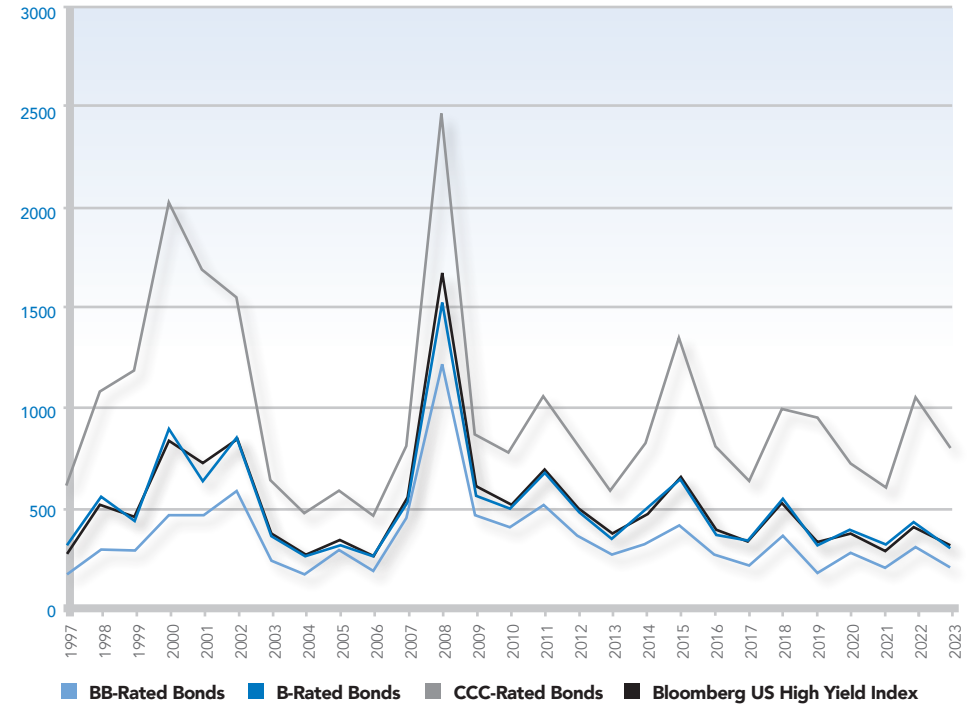
For the month of March 2024, the yield on the 10-year US Treasury Note ended at 4.20%, 5 basis points lower from the previous month. The Bloomberg US Corporate Index tightened by 6 basis points to 0.90% over Treasuries. The A Rated Corporate Credit Spread decreased by 5 basis points to 0.77%. The BBB Rated Corporate Credit Spread decreased by 8 basis points to 1.10%.

HISTORICAL INTEREST RATES & CREDIT SPREADS

Month - Year	5 Yr U.S. Treasury Note	BB-Rated Bonds		B-Rated Bonds		CCC-Rated Bonds		Bbg US High Yield Index	
	Yield to Maturity	Yield*	Spread	Yield*	Spread	Yield*	Spread	Yield*	Spread
31-Dec-97	5.71	7.39	168	8.97	326	11.88	617	8.59	288
31-Dec-98	4.56	7.50	294	10.15	559	15.38	1082	9.83	527
31-Dec-99	6.36	9.20	284	10.84	448	18.22	1186	11.03	467
31-Dec-00	4.99	9.64	465	13.99	900	25.25	2026	13.47	848
31-Dec-01	4.38	8.87	449	10.80	642	21.30	1692	11.66	728
31-Dec-02	2.78	8.60	582	11.37	859	18.30	1552	11.29	851
31-Dec-03	3.25	5.64	239	6.96	371	9.65	640	7.18	393
31-Dec-04	3.63	5.42	179	6.30	267	8.38	475	6.50	287
31-Dec-05	4.35	7.27	292	7.61	326	10.23	588	7.91	356
31-Dec-06	4.70	6.53	183	7.39	269	9.28	458	7.44	274
31-Dec-07	3.45	7.95	450	8.81	536	11.55	810	9.14	569
31-Dec-08	1.55	13.66	1211	16.75	1520	26.21	2466	18.17	1662
31-Dec-09	2.69	7.22	453	8.36	567	11.37	868	8.85	616
31-Dec-10	2.01	6.00	399	7.07	506	9.76	775	7.27	526
31-Dec-11	0.83	5.95	512	7.65	682	11.39	1056	7.82	699
31-Dec-12	0.72	4.31	359	5.58	486	8.84	812	5.83	511
31-Dec-13	1.75	4.44	269	5.39	364	7.66	591	5.57	382
31-Dec-14	1.65	4.89	324	6.67	502	9.85	820	6.48	483
31-Dec-15	1.76	5.93	417	8.30	654	15.27	1351	8.36	660
31-Dec-16	1.93	4.63	270	5.75	382	10.00	807	6.02	409
31-Dec-17	2.21	4.32	211	5.64	343	8.36	615	5.64	343
31-Dec-18	2.51	6.05	354	7.82	531	12.40	989	7.77	526
31-Dec-19	1.69	3.51	182	4.93	324	10.89	920	5.05	336
31-Dec-20	0.36	3.00	264	4.15	379	7.51	715	3.96	360
31-Dec-21	1.26	3.20	194	4.39	313	7.22	596	4.09	283
31-Dec-22	4.01	6.96	295	8.90	489	15.55	1154	8.70	469
30-Apr-23	3.49	6.35	286	8.06	457	14.37	1088	8.01	452
31-May-23	3.76	6.79	303	8.46	470	14.17	1041	8.35	459
30-Jun-23	4.16	6.68	252	8.14	398	13.25	909	8.06	390
31-Jul-23	4.18	6.57	239	7.84	366	12.83	865	7.85	367
31-Aug-23	4.26	6.72	246	7.98	372	12.79	853	7.98	372
30-Sep-23	4.61	7.25	264	8.60	399	13.50	889	8.55	394
31-Oct-23	4.86	7.72	286	9.29	443	14.79	993	9.23	437
30-Nov-23	4.27	6.55	228	7.94	367	13.36	909	7.97	370
31-Dec-23	3.85	5.86	201	6.95	310	11.94	809	7.08	323
31-Jan-24	3.84	6.00	216	7.05	321	12.69	885	7.28	344
29-Feb-24	4.25	6.20	195	7.09	284	12.42	817	7.37	312
31-Mar-24	4.21	6.05	184	6.87	266	12.14	793	7.20	299

Source: Barclays Capital 04/01/2024. For Financial Professional Use *Represents an approximation.

CREDIT SPREADS TO TREASURIES | YEARS ENDED DECEMBER 31



Averages	BB	B	CCC	Bbg US High Yield Index
Period ended March 31, 2024				
2 years	2.72	4.31	9.84	4.19
Period ended December 31, 2023				
5 years	2.27	3.63	8.39	3.54
10 years	2.71	4.23	8.78	4.19
15 years	3.14	4.55	8.59	4.62
20 years	3.51	4.88	8.84	5.04

KEY OBSERVATIONS

For the month of March 2024, the yield on the 5-year US Treasury Note ended at 4.21%, 4 basis points lower from the previous month. The Bloomberg US High Yield Index tightened by 13 basis points to 2.99% over Treasuries. The BB Rated Corporate Credit Spread decreased by 11 basis points to 1.84%. The B Rated Corporate Credit Spread tightened by 18 basis points to 2.66%. The CCC Rated Corporate Credit Spread tightened by 24 basis points to 7.93%.